



INSTALLATION INSTRUCTIONS

P/N 75-5044D
VEHICLE APPLICATION

**1994-2002 Dodge
Ram 2500 & 3500
5.9L Cummins Turbo Diesel**

- * Kit may not fit vehicles with the following **Aftermarket Parts** installed.
- * **Body Lift**
- * **Custom Hood**
- * **Turbo Upgrade**
- * **Intercooler Upgrades**

PARTS LIST

QTY	DESCRIPTION	QTY	DESCRIPTION
1	(P) Intake Tube	1	(E) # 80 Hose Clamp
1	(H) Air Box	3	(K) # 72 Hose Clamp
1	(I) Air Box Adapter	1	(M) # 64 Hose Clamp
1	(D) Air Filter	2	(J) 5/16-18 SS Screw
1	(Q) Hump Adapter	1	(C) Clear Lid
1	(N) Step Adapter	5	(B) SS Concave Washer
3	(F) 1/4-20 Lock Nut	5	(A) SS 10/24 Phillips Screw
3	(L) M6 Lock Nut	3	(G) Fender Washer
3	(R) Rubber Spacer		

TOOLS REQUIRED

- 10mm Wrench or Socket
- 13mm Wrench or Socket
- 5/16" Nut driver or
- Flat Blade Screwdriver
- Phillips Screwdriver

1. With the ignition switched off, place vehicle in Park and or set Parking Brake. Then disconnect both negative battery cables.



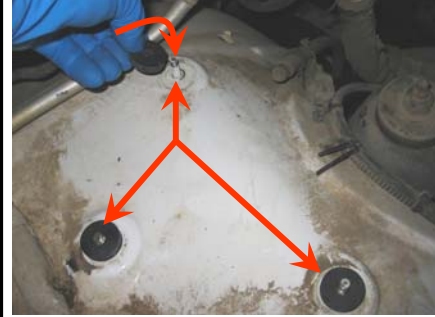
2. Loosen the hose clamp at the turbo inlet, then unclip the air box top and remove the OE intake tube and air filter.



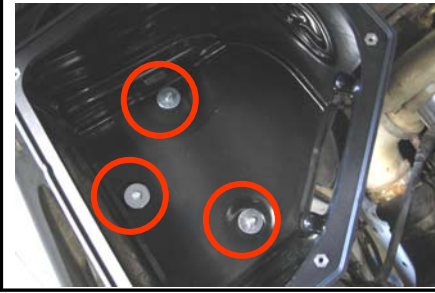
3. Remove the restrictive factory air inlet from the inner fender then pull up to remove the air box from the vehicle.



4. Place a rubber spacer (R) over each of the factory studs on the inner fender, then set the S&B air box (H) in place over the studs.



5. Determine whether your vehicle has SAE or Metric threaded studs and use the appropriate 1/4-20(F) or M6(L) lock nuts supplied and fender washers to secure the S&B air box (H) to the inner fender.



6. Place the S&B air filter (D) into the S&B air box (H).



7. Attach the S&B Filter Adapter (I) to the S&B Air box (H) while slipping the air filter over the flange at the same time.



8. Secure the adapter using the 5/16 screws (J) provided. Then tighten the # 80 hose clamp to secure the filter to the adapter (I).



9. Slide the Step Adapter (N) over the small end of the S&B Intake Tube (P) and secure the # 72 Hose Clamp (K).



Made In The USA

AIR IN. POWER OUT.

THE TECHNOLOGY LEADER FOR PERFORMANCE FILTERS AND INTAKE KITS



S&B FILTERS

PERFORMANCE INTAKE KIT



INSTALLATION INSTRUCTIONS (continued)

10. Slide the Hump Adapter (Q) over the large end of the S&B Intake Tube (P) until almost flush with the end of the tube.



11. Install the S&B air intake tube (P) to the turbo inlet, secure the # 64 hose clamp (M).



12. Slide the S&B Hump Adapter (Q) over the filter adapter (I), center over the gap between the tubes and secure the #72 Hose Clamps (K).



13. Remove the protective covering from the S&B Clear Lid (C).



14. Place the clear lid on the air box and secure using the 8/32 SS Screws (A) and SS Washers (B).



15. Reconnect both negative battery cables.

16. Inspect your installation, make sure kit is properly positioned and all fasteners are secure.

PERFORMANCE TESTING

- * Engage parking brake and start your engine. Listen for abnormal noises. If an air leak is detected, re-inspect hoses and connections as they may need to be repositioned and tightened.
- * S&B FILTERS recommends that you keep your OE intake system in the event it is required in the future.
- * In order to maintain your warranty, all connections and components must be checked periodically for alignment and for proper tension on all connections. Failure to do so may void your warranty.

Emission Standards

The California Air Resource Board (CARB) requires that an E.O. identification label be applied to the vehicle in order to pass a smog check inspection when a Performance Intake Kit has been installed.

You must place the E.O. label provided on or near the intake kit after installation so that a smog check technician can easily verify the E.O. number.

As of April 2009, S&B has never had a product where CARB denied an exemption request; however, the exemption process with CARB can take as long as 18 months. Check the status of the exemption process by looking up a specific part number at www.sbfilters.com. The CARB Exemption number and/or status is listed under the Product Details section for each part number. If the status shows as "Pending," CARB has yet to issue an exemption. Products that have not been issued an EO number are street legal in most states, but may not be used on emission controlled vehicles in the state of California and are for off road use only.

CONTACT S&B FILTERS

(909) 947-0015 Phone (909) 947-0603 FAX
www.sbfilters.com

AIR IN. POWER OUT.

THE TECHNOLOGY LEADER FOR PERFORMANCE FILTERS AND INTAKE KITS



S&B FILTERS

PERFORMANCE INTAKE KIT



EXPLODED VIEW

S&B P/N 75-5044D



CONTACT S&B FILTERS

(909) 947-0015 Phone (909) 947-0603 FAX
www.sbfilters.com

AIR IN. POWER OUT.

THE TECHNOLOGY LEADER FOR PERFORMANCE FILTERS AND INTAKE KITS



S&B FILTERS

PERFORMANCE INTAKE KIT



S&B Filters Dry Disposable Filter FAQs

How often do I need to replace an S&B Dry Filter?

The frequency you replace your S&B Dry Disposable Air Filter will depend on the conditions in which you drive. As a rule, we recommend that you replace your filter at a minimum of every 12,000-15,000 miles. The Filter should be inspected during oil changes and regular service intervals. If you live in extreme dusty climates or frequently drive off road, we recommend that you replace your filter on a more frequent basis.

Can I clean an S&B Dry Disposable Filter?

Ultimately, the filter is disposable; however, the life of the filter can be significantly extended under most conditions by lightly tapping the filter top on a hard surface and using low-pressure compressed air (100 psi maximum) from the inside out to dislodge any dirt or debris from the filter pleats. Under NO circumstances should this filter be washed, as this will damage the filter media.

Will cleaning a Dry Filter with compressed air damage the filter?

No. We have tested this process in our ISO 5011 Test Lab and test results show that capacity of the filter was improved without damaging the efficiency. Visit www.sbfilters.com/dryfilter to see test results of a filter cleaned with compressed air.

Will cleaning a Dry Filter with compressed air help the performance of the filter?

While using compressed air to clean out an S&B Dry Filter will not return the filter to factory condition, it will extend the life of the filter and improve its airflow. Visit www.sbfilters.com/dryfilter for see the test results supporting this claim.

Can I apply oil to an S&B Dry Filter?

Oil should not be applied to S&B's Dry Filter.

CONTACT S&B FILTERS

(909) 947-0015 Phone (909) 947-0603 FAX
www.sbfilters.com

AIR IN. POWER OUT.

THE TECHNOLOGY LEADER FOR PERFORMANCE FILTERS AND INTAKE KITS