



Installation Instructions

Vehicle Application

Year: **2008-10**
 Make: **FORD**
 Model: **F-250, F-350, F-450, F-550**
 Engine: **6.4L Power Stroke**

Tools Required

- 8mm & 10mm Wrench & Socket
- T-20 Security Torx Wrench (Supplied w/ Kit)
- 5/16" Nut Driver or Flat Blade Screwdriver
- Phillips Screwdriver, Pliers or Channel locks

S&B Filter Maintenance

Cleanable (KF-1052). If the enclosed filter is Red, it came pre-oiled from the factory. Please visit www.sbfilters.com for exact oil amount required after cleaning.

Disposable (KF-1052D). If the enclosed filter is White, it is a disposable filter and should be discarded once it reaches capacity. This filter (does not require oil). For more info on S&B's disposable filter, visit www.sbfilters.com.

Notes

Kit may not fit with the following Aftermarket Parts installed:

- Body Lift or Lowering Kit
- Custom Hood
- Intercooler or Turbo upgrades

CARB Status - Pending

Product has been submitted to Air Resources Board for approval.

Not Legal for use in CA or other states adopting CA emissions standards
 See Page 3 for more info.

Before You Start

- Please read the entire product guide before proceeding.
- Ensure all components listed on page 4 are present.
- If you are missing any of the components, call our customer support at (909) 947-0015.
- Do not work on your vehicle while engine is hot.
- Make sure the engine is turned off and the vehicle is in Park or the Parking Brake is set.

1. With the ignition switched off and the parking brake set, disconnect the negative battery cables on both batteries using a 8mm wrench or socket.



2. Unclip the OE air box lid and pull the hot air supply tube out and remove the lid.



3. Remove the OE air filter from the air box.



4. Disconnect the electrical connection from the MAF sensor at the OE air box.



5. Disconnect the electrical connection from the OE restriction gauge. **Note:** Do not rely on OE restriction gauge or until the dash light is triggered before you service your S&B filter.



6. Use a flathead screwdriver to pry the wire loom retaining clip from the OE air box.



7. Loosen the OE hose clamp at the turbo inlet.



8. Loosen the OE hose clamp at the air box connection.



9. OE air box Removal: Grasp the air box at the end and lift up, separating the prongs from the grommets at the bottom of the box.



SEE EXPLODED VIEW ON PAGE 4



Installation Instructions (continued)

10. Use a flathead screwdriver to pry open the OE hose clamp securing the crankcase vent hose to the intake tube. Discard clamp.



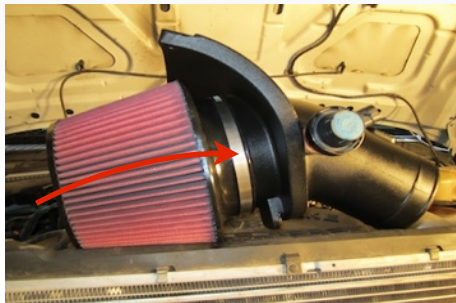
11. Separate the vent hose from the intake tube and remove intake tube from the vehicle.



12. Remove the OE filter gauge and rubber grommet and insert the grommet into the Filter Adapter (G), then insert the filter gauge.



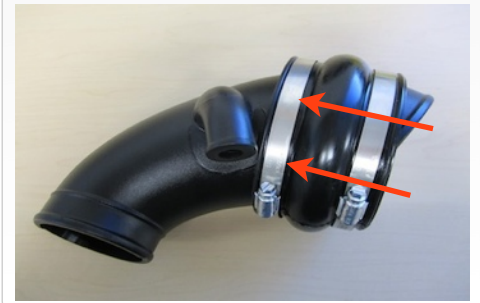
13. Attach the S&B Filter (E) to the Filter Adapter (G), secure with the #80 hose clamp (F).



14. Remove the MAF sensor for the OE cover and attach the MAF sensor to the Filter Adapter (G). Use the MAF Gasket (I) and the OE screws. For 2009 models use the supplied M4 screws (Q). **Do not over tighten!**



15. Place two #72 hose clamps (J) over the Hump Adapter (K) and slide the Hump Adapter over the Intake Tube (L) until it is flush with the end.



16. Place a #52 hose clamp (N) and a #56 hose clamp (P) on the Step Adapter (O) and secure the larger end to the intake tube.



17. Push the small end of the Intake tube assembly over the turbo inlet. Leave the connection loose for now.



18. For those concerned about minimal engine heat; insert the Box Plug (R) into the side of the Air Box (H). For those seeking additional air flow, set the Box Plug aside. **(See page 3 for more info)**



19. Place Air Box (H) in the area of the installation and insert the OE hot air into Plug for warm weather conditions or the Hole for cold weather conditions.



20. Install the Air Box (H) by placing the box at an angle so that it secures around the OE air inlet on the inner fender. Then push down until the 3 prongs slide into the OE rubber grommets. Use grease if necessary.



21. Place the Filter assembly into the Air Box (H), hook the bottom into the lip on the Air Box.



SEE EXPLODED VIEW ON PAGE 4



Installation Instructions (continued)

22. Center the Hump adapter (K) over the gap between tube ends and secure both #72 hose clamps (J). Then tighten the #52 hose clamp (N) at the turbo.



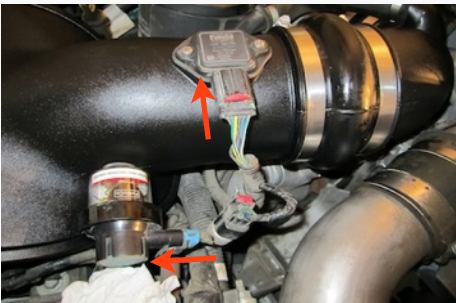
23. Use the #16 hose clamp (M) to secure the crank case breather vent line to the Intake Tube (L). It may be necessary to remove the other OE clamp and reposition the line. Then you will use the other #16 clamp and secure.



24. Remove the protective film from both sides of the Clear Lid (D), place the lid on the air box and secure using the supplied 10-24 screws (B) with sealing washers (C) and 5/16" Screws (A) with Rubber washers (S).



25. Reconnect the MAF sensor and restriction gauge electrical connections.



26. Reconnect both batteries. Inspect your installation, make sure the kit is properly positioned and all fasteners are secure. Affix the CARB sticker near the intake kit. The installation is now complete.



Related Items For Your Purchase

- Replacement Air Filter (Oiled)
(S&B P/N: KF-1051)
- Replacement Air Filter (Dry)
(S&B P/N: KF-1051D)
- Air Filter Wrap (S&B P/N: WF-1022)

Performance Testing

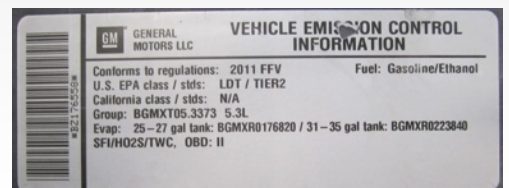
- Engage parking brake and start your engine. Listen for abnormal noises. If an air leak is detected, re-inspect hoses and connections as they may need to be repositioned and tightened.
- S&B FILTERS recommends that you keep your OE intake system in the event it is required in the future.
- In order to maintain your warranty, all connections and components must be checked periodically for alignment and for proper tension on all connections. Failure to do so may void your warranty.
- Use only S&B FILTERS cleaning and oil products to service your filter. Using any other brand oil and or cleaners on your S&B air filter may void your warranty.

Air Box End Cap Testing

Stock air boxes are a significant contributor to poor air flow which is why S&B designs custom air boxes with secondary and/or enlarged openings. With that said, S&B recognizes the benefits of cooler air, so we have included a plug to seal off the opening if so desired. For optimal performance, we recommend that the intake be used without the end cap except in conditions of extreme heat.

Warning!

If your vehicle has a Vehicle Emission Control Information decal affixed to the factory airbox, a new replacement label must be obtained and installed in a readily visible position in the engine compartment in order to remain CARB compliant. Failure to do so will prevent the vehicle from passing a smog check. Replacement labels can be ordered from your local dealership. Regulations state that the VEI label shall not be affixed to any equipment which is easily detached from the vehicle. Label placement, under the hood on a painted surface is recommended.



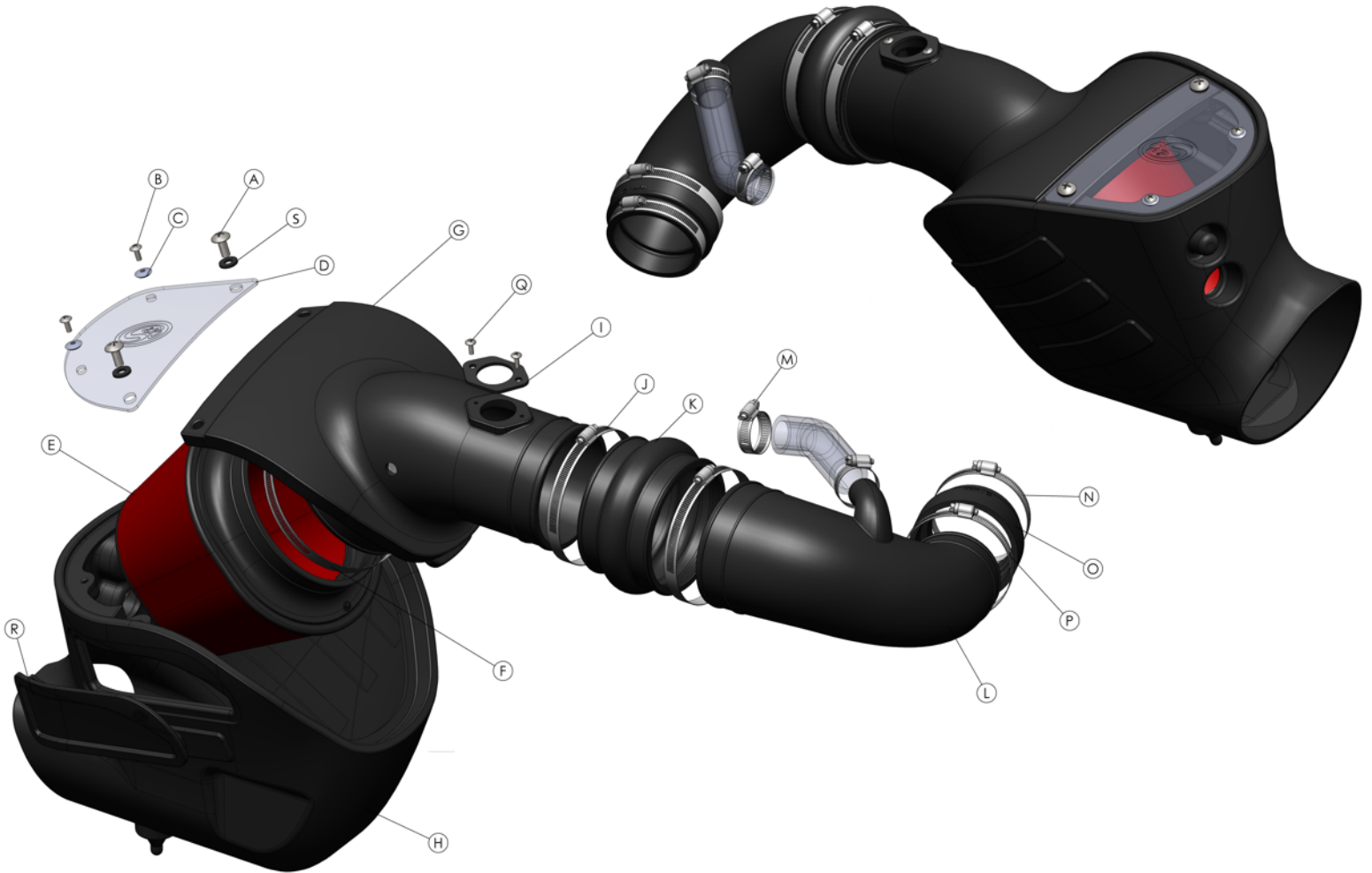
Emissions Standard

The California Air Resource Board (CARB) requires that an E.O. identification label be applied to the vehicle in order to pass a smog check inspection when a Performance Intake Kit has been installed. You must place the E.O. label provided on or near the intake kit after installation so that a smog check technician can easily verify the E.O. number. As of April 2009, S&B has never had a product where CARB denied an exemption request; however, the exemption process with CARB can take as long as 18 months. Check the status of the exemption process by looking up a specific part number at www.sbfilters.com. The CARB Exemption number and/or status is listed under the Product Details section for each part number. If the status shows as "Pending," CARB has yet to issue an exemption but the product has been submitted. Products that have not been issued an EO number are street legal in most states, but may not be used on emission controlled vehicles in the state of California and are for off road use only. If you purchased your kit from S&B Filters directly, we will automatically mail you your Exemption Sticker when it is issued to us. If you purchased your kit from an authorized S&B Filters Dealer, log onto our web site and register to receive your Exemption Sticker.

SEE EXPLODED VIEW ON PAGE 4



Exploded View



ITEM	QTY.	DESCRIPTION	P/N
A	2	S.S. Screw, 5/16-18 x 1.0"	AI1297-00
B	2	S.S. Screw, 10-24 x 1/2"	AI1287-00
C	2	S.S. Sealing Washer, 10-24	AI1272-00
D	1	Clear Box Lid	AI1508-00
E	1	S&B Air Filter	KF-1051
F	1	Hose Clamp, #88	AG1011-00
G	1	Filter Adapter Tube	AL1155-00
H	1	Air Box	AL1154-00
I	1	MAF Sensor Gasket	AI1345-00
J	2	Hose Clamp, #72	AG1009-00
K	1	Hump Adapter	AI1462C-00
L	1	Intake Tube	AL1156-00
M	2	Hose Clamp, #16	AG1001-00
N	1	Hose Clamp, #52	AG1007-00

ITEM	QTY.	DESCRIPTION	P/N
O	1	Silicone Step Adapter	AI1316S-01
P	1	Hose Clamp, #56	AG1019-00
Q	2	S.S. Screw, M4-0.7x10mm	AL1107-00
R	1	Box Plug	AI1510-00
S	2	Rubber Washer	AI1435-00

AM0169-00 Rev/E 09/24/13

Warranty
Visit www.sbfilters.com for complete warranty information.