

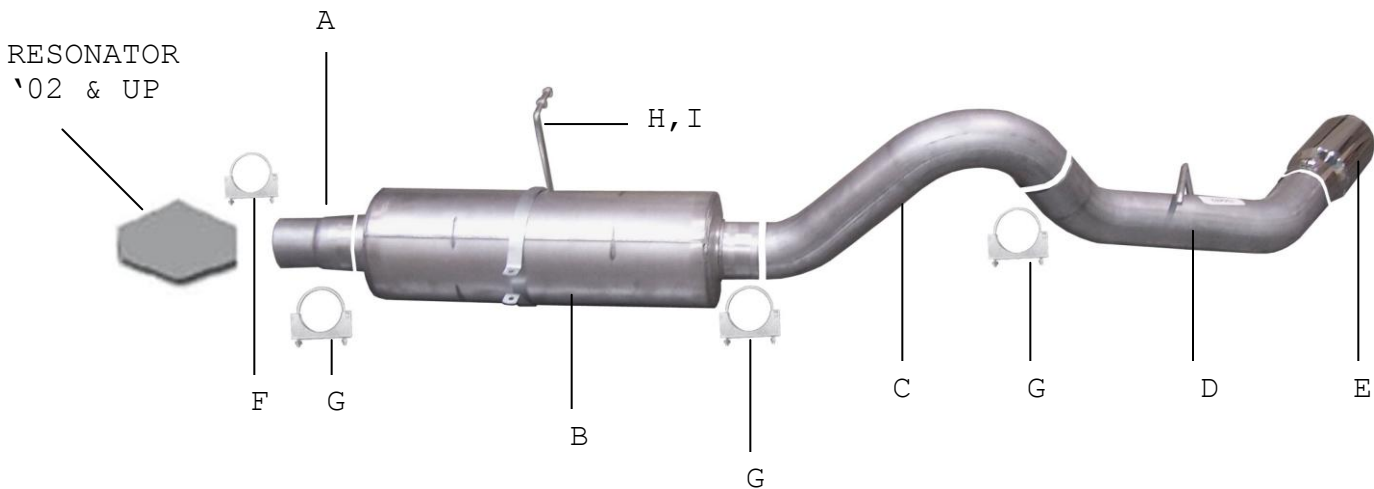


INSTRUCTION MANUAL

CAT-BACK SINGLE 4" STAINLESS EXHAUST

CHEVY 2500HD/3500 TRUCK 6.6L DIESEL 2/4WD
EXTENDED & CREW CAB - SHORT BED

PART # 615541



ITEM	PART #	QTY	DESCRIPTION
A	594-700480S	1	3-1/2" STAINLESS HEADPIPE
B	788040S	1	4" STAINLESS SUPERFLOW MUFFLER
C	595-700481S	1	4" STAINLESS OVERAXLE TAILPIPE
D	596-700482S	1	4" STAINLESS EXIT PIPE
E	500401	1	5" STAINLESS TIP
F	4170	1	3-1/2" CLAMP
G	4171	3	4" CLAMP
H	4213	1	8" BAND CLAMP W/ WELDED HANGER
I	BO-1015	1	BOLT KIT FOR BAND CLAMP

2001 – NO RESONATOR
2002 & UP – HAS RESONATOR
FLANGE CONNECTION BEHIND CONVERTER

Thank you for purchasing our GIBSON EXHAUST SYSTEM for your vehicle. If you need further assistance, please do not hesitate to call our Technical Department at (800) 528-3044, Monday through Friday, 8:00 am to 5:00 PM

INSTALLATION INSTRUCTIONS

PART #615541

WHEN INSTALLING THIS EXHAUST SYSTEM, MAKE SURE TO USE PROPER SAFETY PRECAUTIONS. USE JACK STANDS WHEN UNDER THE TRUCK, BLOCK TIRES AND USE SAFETY GLASSES AND GLOVES. DO NOT WORK WITH HOT PIPES!

SUGGESTED TOOLS

$\frac{1}{2}$ " , 9/16" , 15MM SOCKET & WRENCH, WD-40, JACK STAND, HACKSAW

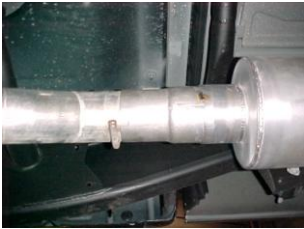


CUT HERE

TO REMOVE STOCK EXHAUST CUT OFF YOUR STOCK SYSTEM JUST IN FRONT OF THE MUFFLER AFTER THE WELD, LEAVE ALL RUBBER GROMMETS ON THE HANGERS. USE WD-40 TO AID IN THE REMOVAL OF EXHAUST AND HANGERS.



INSTALL THE OVERAXLE TAIL PIPE #C INTO THE MUFFLER $1\frac{1}{2}$ "-2" . SECURE TO MUFFLER USING CLAMP #G. DO NOT TIGHTEN.



INSTALL HEAD PIPE # A ON TO YOUR EXISTING STOCK FRONT PIPE AND SECURE WITH CLAMP # F. DO NOT TIGHTEN.



INSTALL THE TURNOUT PIPE #D ON TO THE TAILPIPE. SECURE TOGETHER WITH CLAMP #G. DO NOT TIGHTEN. ROLL THE EXIT PIPE UNTIL IT IS AT THE CORRECT ANGLE FOR YOUR TRUCK. INSERT WELDED HANGER INTO GROMMET.



INSTALL MUFFLER # B ONTO HEAD PIPE #A 1-1/2" TO 2" WITH THE LOUVERS FACING TOWARDS THE CONVERTER. USE A JACK STAND TO SUPPORT THE MUFFLER. USE CLAMP #G SECURE THE MUFFLER TO THE HEAD PIPE. DO NOT TIGHTEN. MUFFLER INLET IS LOOKING INTO THE LOUVERS.



INSTALL STAINLESS STEEL TIP. CLAMP DOWN. WHEN YOU HAVE EVERYTHING IN PLACE, FIRMLY TIGHTEN ALL BOLTS AND CLAMP DOWN SECURELY. TO CLEAN STAINLESS STEEL TIPS USE ANY SAINLESS STEEL CLEANER AND SCOTCH BRITE PAD.



INSTALL BAND CLAMP #H ONTO MUFFLER. INSERT WELDED HANGER INTO RUBBER GROMMET. TIGHTEN BAND CLAMP USING HARDWARE KIT #I.

"MAKE SURE YOU HAVE A MINIMUM OF A 1" CLEARANCE ON ALL PIPES FROM ALL RUBBER BRAKE LINES, TIRES, SHOCKS, FUEL LINES, ETC."

TORQUE CLAMPS TO 100 - 150 FT. LBS.