



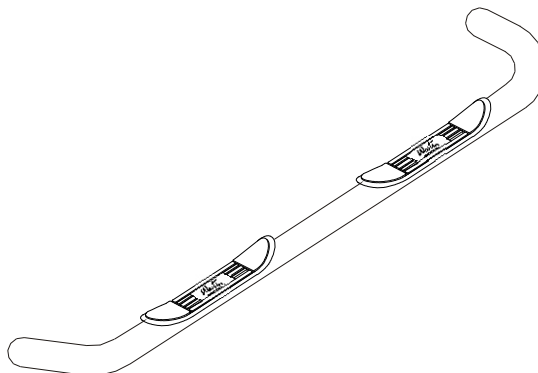
INSTALLATION INSTRUCTIONS

APPLICATION: 1980-98 FORD F-SERIES PICKUP CREW CAB 4X4

AUTOMOTIVE PRODUCTS, INC.

STEP BAR
ASSEMBLIES

25-0795
25-0800

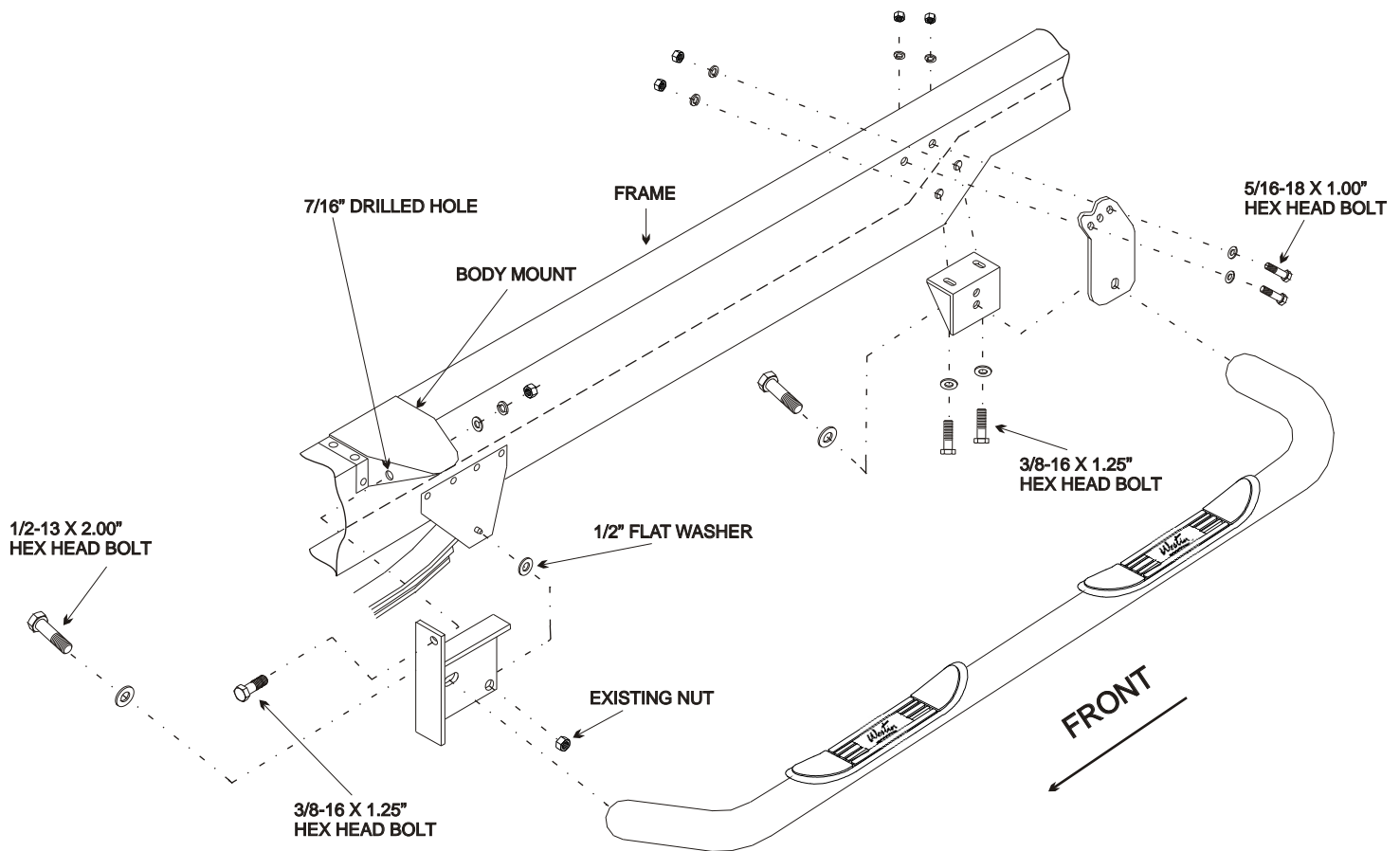


QTY	PARTS KIT CONTENTS	TOOLS REQUIRED
	DESCRIPTION	
1	STEP BAR ASSEMBLY, PASSENGER	7/16" DRILL BIT
1	STEP BAR ASSEMBLY, DRIVER	1/2" SOCKET
1	FRONT MOUNT BRACKET, PASSENGER	9/16" SOCKET
1	FRONT MOUNT BRACKET, DRIVER	3/4" SOCKET
2	REAR MOUNT BRACKET	1/2" WRENCH
2	REAR MOUNT PLATE	9/16" WRENCH
4	1/2-13 X 2.00" HEX HEAD BOLT	3/4" WRENCH
6	1/2" FLAT WASHER	TORQUE WRENCH
4	5/16-18 X 1.00" HEX HEAD BOLT	DRILL
4	5/16" FLAT WASHER	RATCHET
4	5/16" LOCK WASHER	21MM SOCKET
6	3/8-16 X 1.25" HEX HEAD BOLT	
8	3/8" FLAT WASHER	
6	3/8" LOCK WASHER	
4	5/16-18 HEX NUT	
6	3/8-16 HEX NUT	

- STEP 1. Remove the contents from the box and check for any damage. Verify all parts against the parts list.
- STEP 2. Read and understand instructions completely before beginning installation.
- STEP 3. Remove existing Rear Shackle Nut from Front Leaf Spring Assembly as shown. Place a 1/2" Flat Washer over Shackle bolt, then install Front Mount Bracket over the Shackle Bolt and secure by replacing the existing Shackle Nut. Hand tighten. NOTE: The Front Mount Bracket is placed so the bent flange is facing away from the frame and the support flange with the 7/16" hole is facing toward the front of vehicle.
- STEP 4. Once Front Mount Bracket is in place, be sure support flange with the 7/16" hole is positioned against the front of the body mount as shown. Using the hole in the support flange as a guide, drill a 7/16" hole in the front face of the body mount.
- STEP 5. Secure Front Mount Bracket support flange to body mount using (1) 3/8-16 x 1.25" Hex Head Bolt, (2) 3/8" Flat washers, (1) 3/8" Lock Washer and (1) 3/8-16 Hex Nut. Tighten and torque to 30 FT. LBS. Then tighten

and torque existing Shackle Nut to 75 FT. LBS.

- STEP 6. Fasten Rear Mount Bracket to bottom Flange of frame using (2) 3/8-16 x 1.25" Hex Head Bolts, (2) 3/8" Flat Washers, (2) 3/8" Lock Washers and (2) 3/8-16 Hex Nuts. Leave loose.
- STEP 7. Fasten Rear Mount Plate to frame using (2) 5/16-18 x 1.00" Hex Head Bolts, (2) 5/16" Flat Washers, (2) 5/16" Lock Washers and (2) 5/16-18 x Hex Nuts. Leave loose to allow proper alignment with Rear Mount Bracket. NOTE: Use the two slots in plate which line up best with existing holes in frame.
- STEP 8. Position rear leg of Step Bar to Rear Mount Plate and secure using (1) 1/2-13 x 2.00" Hex Head Bolt and (1) 1/2" Flat Washer. Slot in Mount Plate should line up with one of the holes in Mount Bracket. Hand tighten.
- STEP 9. Position front leg of Step Bar up to Front Mount Bracket and secure using (1) 1/2-13 x 2.00" Hex Head Bolt and (1) 1/2" Flat Washer. Hand tighten.
- STEP 10. Tighten and torque Rear Mount Plate bolts to 17 FT. LBS. Tighten and torque Front and Rear Step Bar bolts to 75 FT. LBS. Then tighten and torque Rear Mount Bracket bolts to 30 FT. LBS.



ASSEMBLY AND INSTALLATION VIEW OF DRIVER SIDE - PASSENGER SIDE OPPOSITE

Finish protection - Westin products have a high quality finish that must be cared for like any other exposed finish on the vehicle. Protect the finish with a non-abrasive automotive wax (pure carnauba, for example) on a regular basis. The use of cleaner wax or any compound which contains an abrasive is detrimental, as the compounds scratch the finish and open it to corrosion.